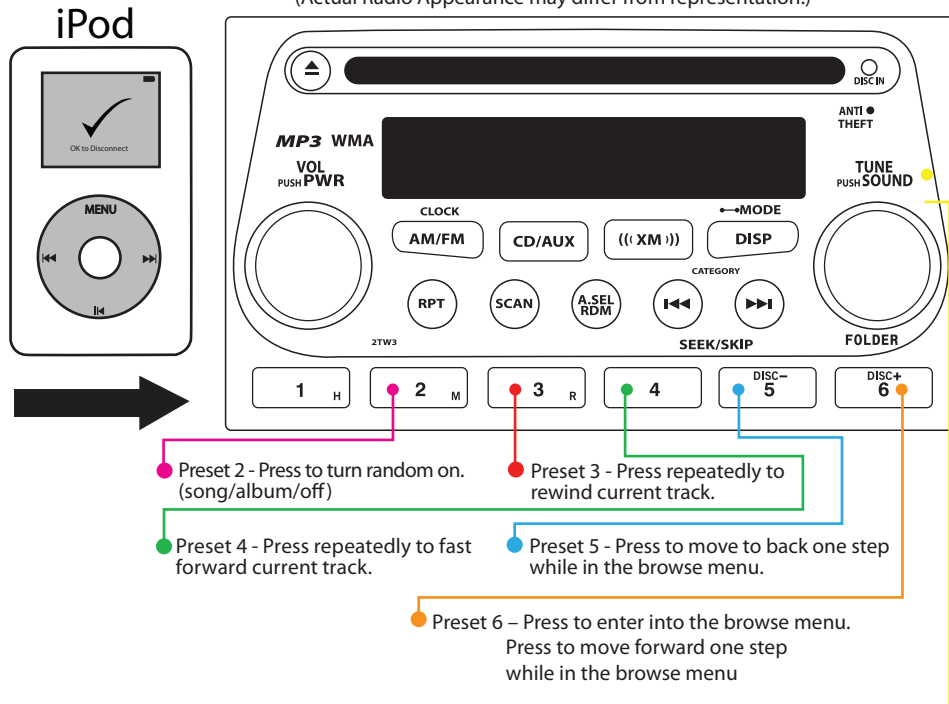


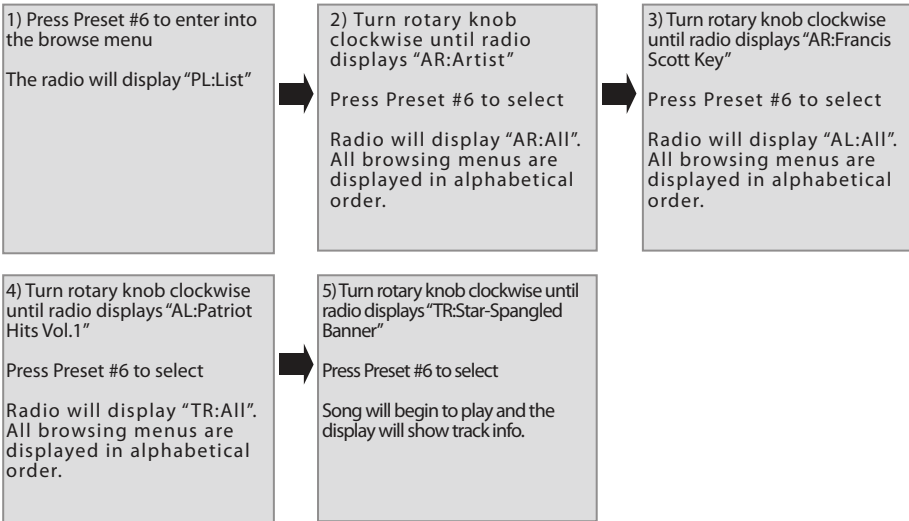
# Honda/Acura

(Actual Radio Appearance may differ from representation.)



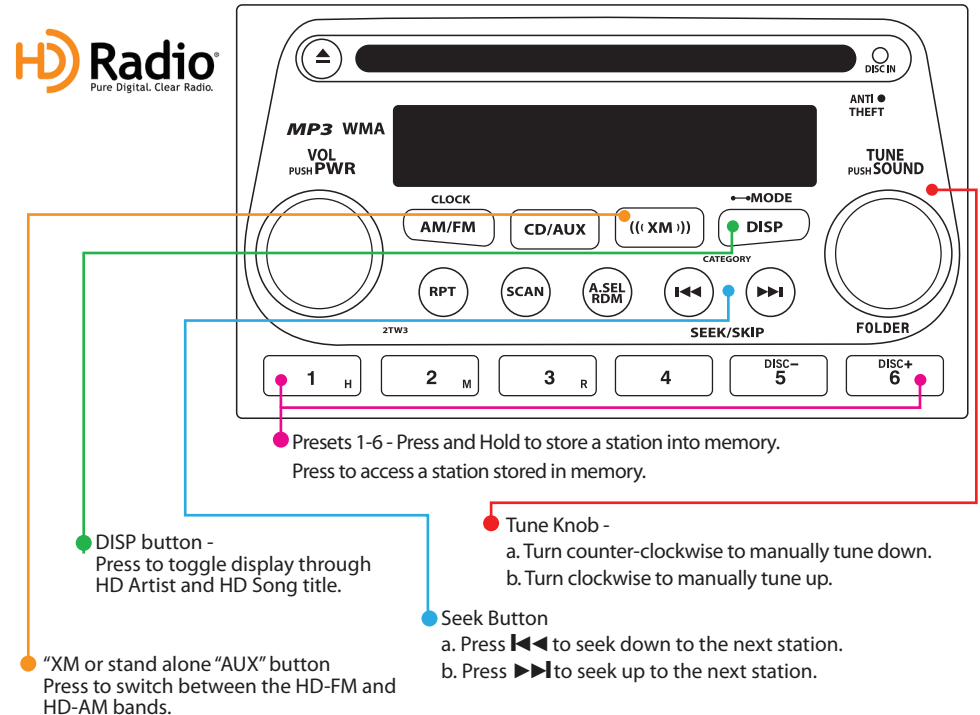
- Tune Knob -
  - a. Turn counter-clockwise to cycle backwards through songs or lists while in browse menu.
  - b. Turn counter-clockwise to return to previous track.
  - c. Turn clockwise to cycle forward through songs or lists while in browse menu.
  - d. Turn clockwise to advance to next track.
- Preset 2 - Press to turn random on. (song/album/off)
- Preset 3 - Press repeatedly to rewind current track.
- Preset 4 - Press repeatedly to fast forward current track.
- Preset 5 - Press to move to back one step while in the browse menu.
- Preset 6 - Press to enter into the browse menu. Press to move forward one step while in the browse menu

Browsing Example:  
To select the song "Star-Spangled Banner" through the Artist category



# Honda/Acura

(Actual Radio Appearance may differ from representation.)



- Presets 1-6 - Press and Hold to store a station into memory. Press to access a station stored in memory.
- DISP button - Press to toggle display through HD Artist and HD Song title.
- Tune Knob -
  - a. Turn counter-clockwise to manually tune down.
  - b. Turn clockwise to manually tune up.
- Seek Button
  - a. Press **◀◀** to seek down to the next station.
  - b. Press **▶▶** to seek up to the next station.
- "XM or stand alone "AUX" button  
Press to switch between the HD-FM and HD-AM bands.

## To select an HD radio station and store presets.

### ACCESSING HD STATIONS

1) Press "SEEK ▶▶" or "SEEK ◀◀" to get to desired station.

Radio will auto lock onto an HD station if available  
example: 92.5 HD1 MHZ

2) When locked onto a station, press "SEEK ▶▶" to access multi-cast HD stations (if available).

example: 92.5 HD2 MHZ

### STORING PRESET

Tune to the desired station using the "SEEK ▶▶" or "SEEK ◀◀" button.

Press and hold (for two seconds) the preset button (1-6) where you wish to store the preset.

"PRSAVED" will be displayed on the screen when preset has been successfully saved.

### RECALLING PRESETS

1) Press the preset button (1-6) that corresponds to the preset you wish to recall.

## Changing Modes:

1) Leaving and re-entering the XM mode (simply push the "AM/FM" to leave the XM mode, Then press the "XM" or stand alone "AUX" button and you will enter the mode select menu. When in the mode select menu one of the following will be displayed; "SAT"; "HD RADIO"; "IPOD"; "AUX1"; or "AUX2". Turn the rotary knob until the desired source is displayed on the screen. The mode will auto select after 4 seconds.